



**LOS ANGELES PACIFIC**  
UNIVERSITY



## MASTER OF ARTS IN **PSYCHOLOGY** General Psychology

### ABOUT THE PROGRAM

The Master of Arts degree in Psychology (MAP) program, a non-clinical, non-licensure track program, is designed to cover all aspects of the psychology profession by emphasizing theory, research, and practice and to give students the broadest range of education and experience to expand their occupational and academic opportunities.

Students are equipped to pursue a career in the areas of industrial and organizational psychology, developmental psychology, or general psychology. This 36-credit program may also serve as a stepping-stone into various doctoral degrees.

### CAREER OPPORTUNITIES

Offers a variety of high-demand career opportunities for positions in private business, government agencies, health practitioners, educational institutions, and science/technology. This program also serves as a pathway into a variety of doctoral programs.

### Highlights

- Integrate God's Word within the profession of psychology
- Demonstrate effective oral and written communication
- Identify and evaluate key personal and professional ethics affecting psychology professionals
- Utilize technology in statistical analysis and data management
- Examine cultural and diversity issues within the field of psychology

### At A Glance

#### Program Credits

Core Courses: **18**

Concentration: **18**

Total Credits to Graduate: **36**

#### Cost Per Credit:

**\$600** (Estimated base cost is \$21,600)

# COURSEWORK

This program features 12 classes at three credits each, which total 36 credits. Each course meets for eight weeks. The graduate student typically takes one course at a time completing two classes each semester. The major core component is 18 credits in length, while the second component consists of 18 credits of a chosen concentration area. For more information, please visit: [lapu.edu/programs/ma-psychology/program-details/](http://lapu.edu/programs/ma-psychology/program-details/)

In order to earn the Master of Arts in Psychology degree, graduate students must complete the following required core courses while achieving a minimum cumulative grade-point average (GPA) of 3.0:

<b>Major Core Requirements</b> 18 credits	<b>PSYC 510</b> Tests and Assessment	3
	<b>PSYC 520</b> Social and Cultural Psychology	3
	<b>PSYC 550</b> Professional and Ethical Issues	3
	<b>PSYC 670</b> Research and Evaluation Methods	3
	<b>PSYC 680</b> Literature Review Advanced Topic	3
	<b>PSYC 690</b> Graduate Psychology Culminating Experience	3

## General Concentration

Students with a general concentration examine, evaluate, and apply psychological principles and methods in a variety of settings through psychoeducational training, intervention strategies, research, human service management, etc. These professionals are able to pursue careers in mental health agencies, correctional facilities, or schools; or the degree may be used in the pursuit of doctoral-level education.

<b>Concentration</b> 18 credits	<i>Choose One:</i>	
	<b>ORGS 610</b> Organizational Behavior and Development	3
	<b>PSYC 600</b> Industrial and Organizational Psychology	3
	<i>Choose One:</i>	
	<b>PSYC 540</b> Personality	3
	<b>PSYC 560</b> Group Work	3
	<i>Choose One:</i>	
	<b>PSYC 640</b> Applied Lifespan Development	3
	<b>PSYC 650</b> Child, Adolescent, and Family Issues and Interventions	3
	<i>Choose One:</i>	
	<b>PSYC 530</b> Motivational Psychology in Organizations	3
	<b>PSYC 590</b> Personnel Selection, Training, and Development	3
	<b>PSYC 620</b> Behavioral Assessment, Modification, and Management	3
	<b>PSYC 630</b> Cognitive Development, Issues, and Interventions	3
	<b>Electives</b>	
	Select six credits of graduate PSYC courses.	6

**Total 36 credits**

## PREPARATION FOR THE DEGREE

**STAT 280** with a grade of C- or higher, or its equivalent is a requisite for the major, specifically a prerequisite for **PSYC 670**.



**LOS ANGELES PACIFIC UNIVERSITY**

admissions@lapu.edu  
626-624-HOPE | lapu.edu



Los Angeles Pacific University is an accredited, Christ-centered learning community that creates new hope for the future by offering convenient and affordable associate, bachelor's, and master's degrees to students of all backgrounds. LAPU provides a high-quality, faith-integrated education that is intentionally accessible, career relevant, and committed to student success.



**LOS ANGELES PACIFIC**  
UNIVERSITY



## MASTER OF ARTS IN **PSYCHOLOGY** Developmental Psychology

### ABOUT THE PROGRAM

The Master of Arts degree in Psychology (MAP) program, a non-clinical, non-licensure track program, is designed to cover all aspects of the psychology profession by emphasizing theory, research, and practice and to give students the broadest range of education and experience to expand their occupational and academic opportunities.

Students are equipped to pursue a career in the areas of industrial and organizational psychology, developmental psychology, or general psychology. This 36-credit program may also serve as a stepping-stone into various doctoral degrees.

### CAREER OPPORTUNITIES

This program prepares the graduate for careers in education, social services, mental health, nonprofit organizations, or may be used in pursuit of doctoral-level education.

### Highlights

- Integrate God's Word within the profession of psychology
- Demonstrate effective oral and written communication
- Identify and evaluate key personal and professional ethics affecting psychology professionals
- Utilize technology in statistical analysis and data management
- Examine cultural and diversity issues within the field of psychology

### At A Glance

#### Program Credits

Core Courses: **18**

Concentration: **18**

Total Credits to Graduate: **36**

#### Cost Per Credit:

**\$600** (Estimated base cost is \$21,600)

# COURSEWORK

This program features 12 classes at three credits each, which total 36 credits. Each course meets for eight weeks. The graduate student typically takes one course at a time completing two classes each semester. The major core component is 18 credits in length, while the second component consists of 18 credits of a chosen concentration area. For more information, please visit: [lapu.edu/programs/ma-psychology/program-details/](http://lapu.edu/programs/ma-psychology/program-details/)



In order to earn the Master of Arts in Psychology degree, graduate students must complete the following required core courses while achieving a minimum cumulative grade-point average (GPA) of 3.0:

<b>Major Core Requirements</b> 18 credits	<b>PSYC 510</b> Tests and Assessment	3
	<b>PSYC 520</b> Social and Cultural Psychology	3
	<b>PSYC 550</b> Professional and Ethical Issues	3
	<b>PSYC 670</b> Research and Evaluation Methods	3
	<b>PSYC 680</b> Literature Review Advanced Topic	3
	<b>PSYC 690</b> Graduate Psychology Culminating Experience	3

## Developmental Psychology Concentration

Students emphasizing in developmental psychology address issues facing individuals from birth to death utilizing a foundation built on cognitive, behavioral, psychological, and theological approaches. Students focus on research, along with assessment, interventions, and application. This program prepares the graduate for careers in education, social services, mental health, or nonprofit organizations; or may be used in the pursuit of doctoral-level education.

<b>Concentration</b> 18 credits	<b>PSYC 530</b> Motivational Psychology in Organizations, <b>-or-</b>	3
	<b>PSYC 540</b> Personality	
	<b>PSYC 620</b> Behavioral Assessment, Modification, and Management	3
	<b>PSYC 630</b> Cognitive Development, Issues, and Interventions	3
	<b>PSYC 640</b> Applied Lifespan Development	3
	<b>PSYC 650</b> Child, Adolescent, and Family Issues and Interventions	3
	<b>Electives</b>	
Select three credits of graduate PSYC courses.	3	

<b>Total</b>	<b>36 credits</b>
--------------	-------------------

## PREPARATION FOR THE DEGREE

**STAT 280** with a grade of C- or higher, or its equivalent is a requisite for the major, specifically a prerequisite for **PSYC 670**.



**LOS ANGELES PACIFIC UNIVERSITY**

admissions@lapu.edu  
626-624-HOPE | lapu.edu



Los Angeles Pacific University is an accredited, Christ-centered learning community that creates new hope for the future by offering convenient and affordable associate, bachelor's, and master's degrees to students of all backgrounds. LAPU provides a high-quality, faith-integrated education that is intentionally accessible, career relevant, and committed to student success.



**LOS ANGELES PACIFIC**  
UNIVERSITY



## MASTER OF ARTS IN **PSYCHOLOGY**

Industrial and Organizational Psychology

### ABOUT THE PROGRAM

The Master of Arts degree in Psychology (MAP) program, a non-clinical, non-licensure track program, is designed to cover all aspects of the psychology profession by emphasizing theory, research, and practice and to give students the broadest range of education and experience to expand their occupational and academic opportunities.

Students are equipped to pursue a career in the areas of industrial and organizational psychology, developmental psychology, or general psychology. This 36-credit program may also serve as a stepping-stone into various doctoral degrees.

### CAREER OPPORTUNITIES

Positions in areas such as human resources, training, marketing, organizational development, and organizational behavior. Pursue careers as corporate researchers, consultants, trainers, staff psychologists, or pursue doctoral-level education.

### Highlights

- Integrate God's Word within the profession of psychology
- Demonstrate effective oral and written communication
- Identify and evaluate key personal and professional ethics affecting psychology professionals
- Utilize technology in statistical analysis and data management
- Examine cultural and diversity issues within the field of psychology

### At A Glance

#### Program Credits

Core Courses: **18**

Concentration: **18**

Total Credits to Graduate: **36**

#### Cost Per Credit:

**\$600** (Estimated base cost is \$21,600)

# COURSEWORK

This program features 12 classes at three credits each, which total 36 credits. Each course meets for eight weeks. The graduate student typically takes one course at a time completing two classes each semester. The major core component is 18 credits in length, while the second component consists of 18 credits of a chosen concentration area. For more information, please visit: [lapu.edu/programs/ma-psychology/program-details/](http://lapu.edu/programs/ma-psychology/program-details/)

In order to earn the Master of Arts in Psychology degree, graduate students must complete the following required core courses while achieving a minimum cumulative grade-point average (GPA) of 3.0:

<b>Major Core Requirements</b> 18 credits	<b>PSYC 510</b> Tests and Assessment	3
	<b>PSYC 520</b> Social and Cultural Psychology	3
	<b>PSYC 550</b> Professional and Ethical Issues	3
	<b>PSYC 670</b> Research and Evaluation Methods	3
	<b>PSYC 680</b> Literature Review Advanced Topic	3
	<b>PSYC 690</b> Graduate Psychology Culminating Experience	3

## Industrial and Organizational Psychology Concentration

Students emphasizing in industrial and organizational psychology examine, evaluate, and apply theories and methods in workplace settings through continuous improvement strategies, positive performance interventions, motivational principles, and values-based approaches in the organization. Graduates build careers within the business sector in areas such as human resources, training, marketing, organizational development, and organizational behavior.

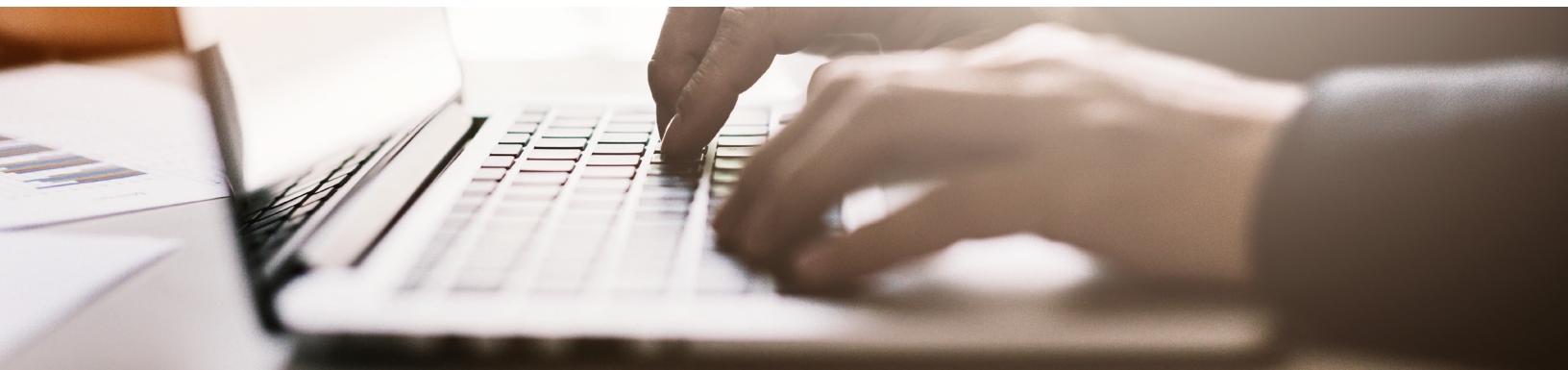
These professionals will be able to pursue careers as corporate researchers, consultants, or trainers; or the degree may be used in the pursuit of doctoral-level education.

<b>Concentration</b> 18 credits	<b>ORGS 610</b> Organizational Behavior and Development	3
	<b>PSYC 530</b> Motivational Psychology in Organizations	3
	<b>PSYC 560</b> Group Work	3
	<b>PSYC 590</b> Personnel Selection, Training, and Development	3
	<b>PSYC 600</b> Industrial and Organizational Psychology	3
	<b>Electives</b> Select three credits of graduate PSYC courses.	3

**Total 36 credits**

## PREPARATION FOR THE DEGREE

**STAT 280** with a grade of C- or higher, or its equivalent is a requisite for the major, specifically a prerequisite for **PSYC 670**.



**LOS ANGELES PACIFIC UNIVERSITY**

admissions@lapu.edu  
626-624-HOPE | lapu.edu



Los Angeles Pacific University is an accredited, Christ-centered learning community that creates new hope for the future by offering convenient and affordable associate, bachelor's, and master's degrees to students of all backgrounds. LAPU provides a high-quality, faith-integrated education that is intentionally accessible, career relevant, and committed to student success.